

Paradis



Version 1.0 Stand 11-2016

USER MANUAL

Contents

MAC PARA COMMUNITY	2
GENERAL	3
OVERALL PLAN	4
TECHNICAL DESCRIPTION	5
MATERIALS.....	8
TECHNICAL SPECIFICATIONS.....	9
HARNESS.....	9
CHECK ON A NEW PARAGLIDER	10
ADJUSTING BRAKE LINES	10
FLYING THE PARADIS	11
TOWING	15
MOTORISED FLIGHT.....	15
EXTREME FLYING MANOEUVRES	15
RAPID DESCENTS.....	19
LOOKING AFTER YOUR PARAGLIDER.....	21
FULL LINE LENGTHS	23
LINE PLANS	24
LINE PLAN PARADIS	25
LINE LENGTHS OF PARADIS.....	26
MANUAL FOR PARAGLIDER CHECKS.....	28
TREATING NATURE WITH RESPECT	30
CHECKS	30
TEST FLIGHT CERTIFICATE.....	31
TECHNICAL DATA	31

MAC PARA COMMUNITY



MAC PARA



Newsletter



Facebook



Twitter



YouTube



Vimeo



Pinterest



Download

www.macpara.com/community

Dear MAC PARA pilot

We congratulate you on your purchase of a MAC PARA paraglider. Extensive development work and numerous tests make the Paradis a very high performance paraglider with maximum possible safety. The Paradis is constructed for thermal and cross-country flying, and will enable pilots to get maximum enjoyment. The Paradis offers very easy inflation and simple ground-handling characteristics by take off, excellent handling in flight and easy landing. Please read this manual carefully before you start, this way you will get the most out of your glider. MAC PARA wish you many enjoyable flights with your New Paradis.

Please read this manual carefully and note following details:

Paragliding is a sport, which demands, besides the optimum equipment, a high degree of attentiveness, good judgement, and theoretical knowledge. Paragliding can be a dangerous sport, which may lead to injury and death. This paraglider meets at the time of delivery requirements of the EN (European Norm) 926 or LTF (German Certificate of Airworthiness). Any alternations to the paraglider will render its certification invalid! The use of this paraglider is solely at the user's own risk! Manufacturer and distributor do not accept any liability. Pilots are responsible for their own safety and their paraglider airworthiness. The paraglider carries no warranty! The author assumes that the pilot is in possession of a valid paragliding licence for glider's category, insurance etc.

Before delivery, as well as during production, each paraglider goes through a strict visual inspection, and is test-flown by your dealer. Stamps on the placard, together with a completed test-flight certificate, confirm this. Check that the paraglider has been test-flown before your first take-off. If it has not, consult your dealer.

Any inadequate use or misuse increases the risks considerably. The Paradis must not be used outside the certified weight range. The Paradis must not be used during rain or snow-fall. The Paradis must not be used in high or gusty winds. The Paradis must not be used in cloud and fog. The Paradis must not be used by pilots without sufficient knowledge or experience.

If, after carefully reading this handbook, you still have questions, suggestions or criticism regarding this product do not hesitate to contact your dealer or us. We will be glad to help and advice.

MAC PARA wish you nice –XC flights with your Paradis.

Version 1.0 Stand 11.2016

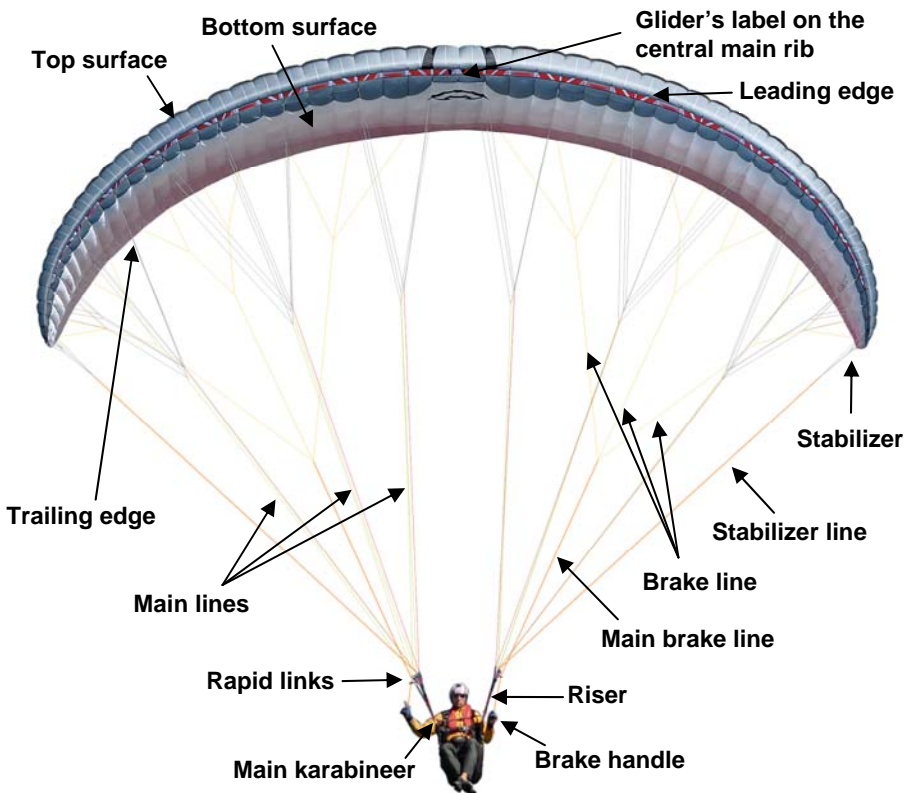


Operating limits

The Paradis is light sport aircraft with an empty weight of less than 120 kg in the category paraglider. The Paradis has been tested by DHV certification laboratory to LTF / EN-B category. The Paradis is certified for solo flight. The Paradis has been load and shock-tested and passed with a load corresponding to 8G of the maximum weight in flight 145 kg. Its flying tests have shown that the glider remains stable and controllable over a wide range of normal and abnormal flight conditions. Nevertheless, turbulence and gusting winds can lead to a partial or complete collapse of the canopy. Therefore never fly in such conditions.

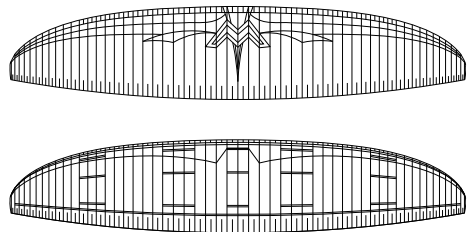
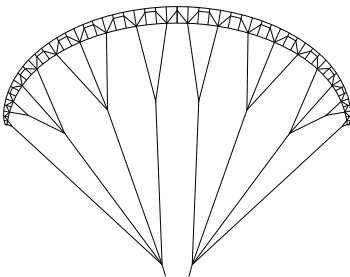
Any changes made to this paraglider invalidate the certificate of airworthiness.

OVERALL PLAN



Construction of the canopy:

The canopy of the PARADIS consists of 56 cells over the wingspan. The wingtips are slightly pulled down and this produces a kind of stabilizer. The Paradis is combination three and four rib diagonal-construction paraglider. Every main rib is attached to the 3 suspension lines. Between these main suspension ribs, intermediate ribs are suspended by “bridge” diagonal ribs system. These diagonal ribs lead to 80% of height of ribs. This construction ensures a smooth top surface and precise airfoil reproduction. The internal reinforcements maintain the precise form of the canopy and provide stability. The cell openings on the under-surface of the profile’s nose provide airflow into the glider. Stretch resistant flares, integrated with diagonal ribs at the suspension points, ensure an even distribution of load throughout the canopy. A stretch resistant Mylar-reinforcements combined with plastic rods on the leading edge help to keep airfoils in right shape and this guarantees a high level of stability. Large cross spots allow effective airflow inside the canopy, providing good re-inflation without reducing the profile accuracy. The Paradis is made of the proven Nylon fabrics Porcher Sport Skytex Rip-stop. Like any synthetic material, this can deteriorate through excessive exposure to UV.



Rigging system:

The galery lines and brake lines of the Paradis are made of proven strong and stretch resistant non-sheathed Edelrid Aramid/Kevlar lines. Main lines are made from sheathed Liros PPSL Dynema. The entire rigging system comprises individual suspension lines looped and stitched at each end. The Aramid cascade unsheathed lines and main Dynema lines have strengths from 70 kg up to 200 kg.

The suspension lines are comprised of “cascaded top lines” (attached to the under-surface), and “main lines”. Main lines lead to the “quick link” (a Maillon which connects lines and risers). The “stabilizer lines” connect the upper stabilizer lines on the outer suspension points with the quick link. The “brake lines” are not load carrying suspension lines. They lead from the trailing edge of the canopy to the main brake lines and run through the pulleys on the C-risers to the brake handles.



A mark on the main brake line indicates the position of the brake handle. This adjustment, on the one hand, allows sufficient brake to be applied during extreme flying situations and when landing, while on the other hand, this ensures that brakes are not permanently applied to the canopy (especially when fully accelerated). This trimming should not be altered. For differentiation purposes the main A-lines are coloured red, the main brake lines are orange, all remaining main lines are yellow. Also the main suspension loop, on the bottom of the riser, is covered red. This is where the main karabiner should be hooked in, which then in turn connects the risers to the harness. The Paradis is equipped with 4 risers per side (A, A1, B, C). The two central A-lines per side are attached to the main A-risers while outermost A main lines are attached to A1 risers. The 3 B-main lines and the stabilizer lines are attached to the B-riser. The 3 C-main lines to the C-riser. The main brake lines leads through the pulleys on the C riser.

The line connections are made to triangular Maillons (quick links) fitted with a rubber "o- ring" in the form of a "figure eight" which prevents any slipping of the lines on the quick link. See line plan for details.

Speed system:

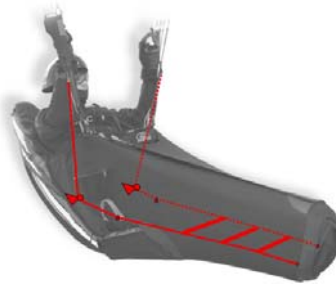
The Paradis is equipped with a stirrup operated speed-system, which returns automatically to normal position when the stirrup is released. The serial risers of the Paradis do not have a lockable trimmer.

The speed system affects the A-, A1- and B- risers and changes the angle of attack. In normal flight all risers have an overall length of 49,5 cm without quick links. When the stirrup is pushed out the A-risers are shortened by up to a maximum of 17,5 cm, the A1-risers are shortened by up to a max of 14,5 cm, the B-risers by up to a max. of 11 cm, the C-risers retain their original length. These measurements influence the certification! An incorrectly fitted speed system causes loss of certification!

Fitting the speed-system:

Most modern harnesses have pulleys attached for speed system fitting. In case not, it is important to attach pulleys (sewn on tabs) in such a way that they allows the pilot to maximize the power vector of his / her legs without "pushing back" in the harness.

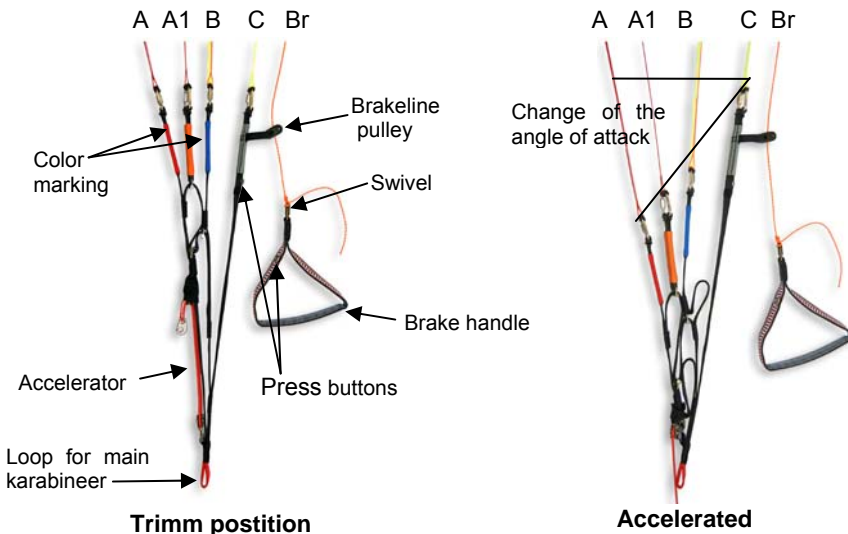
The Paradis speed system, including Brummel-hooks supplied, must be assembled as per instructions. The speed system cord is firmly attached (use bowline or other nonslip knot) to the foot stirrup (webbing or alloy bar). The other end of the cord is run through a pulley on the harness and then in an upward direction to be then firmly attached to the Brummel-hooks! The length of the cord leading to the stirrup should be adjusted so that it is easy to put your feet into the stirrup in flight but still short enough to allow full speed system travel. (Use of 2 stirrups in a ladder fashion can enable you to reach the full range if your legs are not long enough.) Ensure both cords on the stirrup are of equal length, to avoid putting a turn in the glider.



Test your speed system for the correct length of cord on the ground first (simulating flying position), with your harness and risers, before flying with it! The full range is reached when the 2 pulleys join together.

Before launch, attach the paraglider's risers to the harness with the main karabiners. Then attach the "Brummel-hook" on the end of each speed system cord to the Brummel hook on the end of the cord which runs through the 2 pulleys on the A risers. Ensure that the speed system is untangled and operates freely before flying!

Riser



Slower

Faster

Tissue

(PORCHER SPORT, Rue du Ruisseau B.P. 710,38290 ST. QUENTIN FALLAVIER, FRANCE)

- Top Sail - Leading Edge - SKYTEX 38 Universal E25A - 100% nylon 6.6 , 33 Dtex, 38 g/m²
- Top Sail - Trailing Edge - SKYTEX 27 Classic II E71A - 100% nylon 6.6 , 27 g/m²
- Bottom Sail - Leading Edge - SKYTEX 38 Universal E25A - 100% nylon 6.6 , 33 Dtex, 38 g/m²
- Bottom Sail - Trailing Edge - SKYTEX 27 Classic II E71A - 100% nylon 6.6 , 27 g/m²
- Main ribs, Diagonals - SKYTEX 32 Hard E4D - 100% nylon 6.6 , 33 Dtex, 32 g/m²
- Ribs - SKYTEX 27 Classic E71A - 100% nylon 6.6 , 27 g/m²
- Reinforcement main ribs - SR 170 Polyester 170 g/m²
- Reinforcement Ribs - SR 170 Polyester 170 g/m²

Lines

(EDELMAN+RIDDER+CO. Achener Weg 66, D-88316 ISNY IM ALLGEAU, GERMANY)

- Upper lines, Stabilo, Brake lines - Aramid 8000/U-070, Bruchlast 70 kg
- Middle cascade A, B, C - Aramid 8000/U-090, Bruchlast 90 kg
- Upper lines, Brake lines - Aramid 8000/U-130, Bruchlast 130 kg
- Main brake line - Dynema/Polyester A-7850-200, Breaking Load 200 kg

(ROSENBERGER TAUWERK, GERMANY)

- Main lines A1, B1 - Dynema /Polyester PPSL 160, Bruchlast 160 kg
- Main lines C1,C2,C3 - Dynema /Polyester PPSL 191, Bruchlast 191 kg
- Main lines A2,A3,B2,B3- Dynema /Polyester PPSL 200, Bruchlast 200 kg

Attachment straps

(STUHA a.s., DOBRUSKA, Opočenská 442, 518 01 Dobruška CZECH REPUBLIC)

- STAP-POLYESTERBRIDLE 13 mm, Breaking Load 70 kg

Risers

(Cousin Trestec, 8 rue Abbé Bonpain 59 117 Wervicq-sud France, FRANCE)

- Aramid-Polyester 3455 12 mm Breaking Load 1100 kg

Thread

(AMANN SPONIT ltd, Dobronická 635, 148 25 PRAHA 4, CZECH REPUBLIC)

- Lines-SYNTON 60, Main lines-SERABOND 60, Canopy-SYNTON 40, Riser-SYNTON 20

Rapid links

(PEGUET SA, BP 205 - ZI du Mont Blanc, F-74105 ANNEMASSE FRANCE)

- Maillon Rapide - Delta Special MRDI 03.0 S10 – Breaking Load 550 kg

Rigifoils

(MERKUR SLOVAKIA s.r.o., Kamenné pole 4554/6,031 01 Liptovský Mikuláš, SLOVAKIA)

- Rigifoils - Nylon 1,6 mm, 2,3 mm

TECHNICAL SPECIFICATIONS

High Performance EN-B Size		Paradis 22 (XS)	Paradis 24 (S)	Paradis 26 (M)	Paradis 28 (L)	Paradis 30 (XL)	Paradis 33 (XXL)
Zoom flat	[%]	88	92,5	96	100	104	109
Area flat	[m ²]	21,54	23,79	25,63	27,81	30,08	33,04
Area projected	[m ²]	18,45	20,38	21,95	23,82	25,76	28,3
Span flat	[m]	11,28	11,86	12,31	12,82	13,33	13,97
Aspect ratio flat	-	5,91	5,91	5,91	5,91	5,91	5,91
Root cord	[m]	2,46	2,58	2,68	2,79	2,90	3,04
Cells	-	56	56	56	56	56	56
Weight	[kg]	3,85	4,1	4,3	4,6	4,85	5,15
Weight range - free *	[kg]	55-75	70-90	78-100	90-112	105-130	115-145
Weight range - free *	[lbs]	121-165	154-198	172-220	198-247	231-287	254-320
Min.speed	[km/h]	23-25	23-25	23-25	23-25	23-25	23-25
Max.speed	[km/h]	37-39	37-39	37-39	37-39	37-39	37-39
Top speed (accelerator)	[km/h]	50-52	50-52	50-52	50-52	50-52	50-52
Glide ratio	-	+10	+10	+10	+10	+10	+10
Min. Sink rate	[m/s]	1,05	1,05	1,05	1,05	1,05	1,05

* Free flying pilot equipped = weight naked + cca. 15 kg (33 lbs)

HARNESSES

The Paradis is certified with GH type certified ABS harnesses. Nearly all harnesses available on the market are „GH“ type. These harnesses have the distance between the seat plate and carabineers 42-47 cm depending on the size of the harness . Please note: the hang point position changes the position of the brakes relative to the pilot's body.

The distance between carabineers (adjustable on chest strap) is 42 cm for the glider sizes S and M , 44 cm for the glider size L, 46 cm for the glider sizes XL and XXL. Differences of more than 5cm change the basic characteristics of the glider and are potentially dangerous.

Nearly all on the market ABS harnesses are " GH " harnesses and suitable for the Paradis . These "GH"harnesses are different to "GX" harnesses, which have a lower attachment point for the main karabiners and effective cross bracing. The Paradis was not tested with harnesses with an effective cross bracing system.

MAC PARA recommends very comfortable covered Haven harness for XC flights.

CHECK ON A NEW PARAGLIDER

Before delivery, as well as during production, each paraglider goes through a strict visual inspection. Additionally we recommend that you to check your new glider in accordance with the following points. We recommend that you make this check after flying extreme manoeuvres or after tree landings or similar.

- Inspection of the canopy for tears or damage, especially the seams which join the ribs to the upper and lower surfaces, but also the area of the attachment tapes and brake-line connections.
- Inspection of the lines for damage to the stitches. The line lengths must be checked after 50 hours flying time and whenever the flight behaviour of the glider changes.
- Inspection of attachment tapes for damage to the stitches. It is also important to check the attachment tapes and brake-lines for tangles.
- Inspection of the risers for faultless condition. Rapid links must be secured.

With even slight damage the glider loses its airworthiness!

ADJUSTING BRAKE LINES

The brake lines lead from the trailing edge of the canopy to the main brake lines which then run through pulleys on the C-risers to the brake handles. A mark on the main brake line indicates the position of the brake handle.

The glider is delivered with a standard set-up and its speed can reach 38 - 40 km/h depending on the weight of the pilot. The brake-lines should always be adjusted so that the first brake-lines just come under tension when the brake handles have been pulled 5-10 cm. The test results relate to this brake-line adjustment. This adjustment, on the one hand, allows sufficient brake to be applied during extreme flying situations and when landing, while on the other hand, it ensures that the canopy is not permanently braked (especially when fully accelerated). This trim should not be altered. In extreme situations any other settings may lead to the glider reacting differently to versions which have been tested.

NOTE!! If in doubt about the brake-line adjustment, it is preferable to leave them too long, as any necessary shortening can easily be achieved by wrapping them round your hand.

	Paradis 22	Paradis 24	Paradis 26	Paradis 28	Paradis 30	Paradis 33
Length of the control lines	285 cm	298 cm	307 cm	320 cm	333 cm	350 cm
Braking range at max. wingloading	62 cm	65 cm	70 cm	75 cm	77 cm	82 cm

(The publication of the brake travel is claimed by the EN 926.)

The following information must not under any circumstances be taken as a manual for practising paragliding. We would like to advise you of the Paradis's features and important information for your flying and security.

Preparing for take off:

As for any aircraft a thorough pre-flight check must be made prior to each flight on the Paradis! Before every launch check lines, risers and canopy for damage! Do not launch with even the slightest damage!

Also check the maillons connecting the lines and the risers. They have to be closed tight. Put on the harness with maximum care and check the handle of the safety system and that all the flaps of the outer container are fastened securely and correctly. The main karabiner must also be checked carefully. Replace it if any damage is visible, or generally after 300 flying hours. Finally connect the risers to your harness with the main karabiners.

Check carefully that they are properly closed. **Attention! Never fly with an open main karabiner! Do not take off if you find any damage on your equipment!**

Having unpacked and laid out the paraglider in a slight horseshoe pattern the following checks must be made:

Checklist:

Preparing the wing:

- canopy without any damage
- risers without damage
- maillons (quick links) closed tight
- stitching of the main lines near the risers is o.k.
- all main lines run free from the riser to the canopy, brake lines are free

Putting on the harness:

- rescue handle and deployment pins secure
- buckles (leg- ,front riser) closed
- main karabiners

Before takeoff:

- speed-system mounted and connected properly
- risers not twisted
- brake handle in hands, brake lines free
- pilot's position relative to the wing (centred: all lines same tension)
- wind direction
- obstacles on the ground
- free airspace



When laying out the glider, the wind direction should be observed. The canopy should be deployed into the wind so both halves of it are loaded symmetrically. The paraglider should be arranged in a semicircle against the wind. This ensures that the A-lines in the centre section of the canopy will tension before the ones at the wing tips. Thus the canopy inflates evenly and an easy launch in the desired direction is guaranteed.

All lines and risers should be carefully untangled and arranged in a way that they do not catch on anything. It is equally important to untangle the brake lines so that they are clear and can not catch on any thing during launch. The brake lines should run freely through the pulleys to the trailing edge of the canopy.

Make sure the risers are not twisted; this can prevent the brake lines from running freely through their pulleys. It is often impossible to untangle lines during flight.

It is important that no lines are looped around the canopy. Also called a “line-over”, this may have disastrous consequences during take off. Finally connect the risers with your harness by using the main karabiners. Check carefully that they are closed properly.

Launch

The Paradis is very easy to launch. This is possible in almost all wind conditions except strong headwinds. Before take off recheck the canopy, the direction of the wind and the air space around you! When the pilot is ready to take off he/she holds all A-risers and the brake handles in each hand. To facilitate differentiation between the risers, the A-lines, including the sleeves on the A-risers, are coloured red. Before take-off, place yourself centrally at the gliders axis. Let the B- and C-risers fall into the crook of your arm and hold the A risers with arms outstretched behind you. Pull up the canopy dynamically using the A-risers. (The stronger the headwind the less run-up you need to pull the canopy up). After the initial effort of inflation, keep applying forward pressure on the A-risers (pushing them forward, not pulling down) until the pressure on the A risers eases. The canopy should now be directly over the pilot's head. As soon as the glider is above you, stop pulling on the A-risers. A good progressive run ensures your Paradis will inflate and come up equally and quickly. Should the canopy surge forward, control it by braking gently. Now do a visual check upwards, to ensure the canopy is completely open (otherwise, abort the take-off). Only then is the final decision to continue the launch taken! If anything is not completely safe the launch should be aborted!

Now accelerate continuously until you lift off. It is easier to take-off in a light headwind if after reaching minimum flying speed you apply the brakes slightly. After the take-off, gently release the brakes again.

The paraglider should be braked gently to stabilize the glider and possibly correct for drift. Moving the pilot's body to the centre of the glider is the best method of correction, if there is sufficient room.

WARNING!! Do not use the forward launch in very strong winds. Make sure you don't pull the risers too much towards yourself or downwards as this can result in a frontal collapse, or in an asymmetric take-off.



The Paradis is easy to reverse launch. When doing a reverse launch or when launching in strong winds the paraglider can possibly surge forward more quickly or lift off sooner than desired. To avoid this, walk uphill following the canopy during inflation. As this launch technique can be difficult and turning the wrong way can result in the pilot taking off with twisted risers. It is recommended to practice the reverse launch on a training hill or slight slope first. When deflating the canopy in strong winds, or aborting a launch, use the C- risers, not the brakes. Using the brakes in strong wind will cause more lift, lifting the pilot up and dragging him/her much further back.

If you let the brake handles go out of your hands during take-off, take care that the brake line is not twisted around the brake pulley!

Flight

The glider is delivered with a standard set-up and its speed can reach 38 - 40 km/h depending on the weight of the pilot. Always fly with sufficient clearance from the terrain. The Paradis glides best with open brakes, descends best with lightly applied brakes. In turbulence fly with brakes lightly applied (10-15 cm) to avoid canopy collapse. If the canopy pendulums forward, this should be corrected by prompt braking. A pendulum movement of the canopy backwards is corrected by loosening the brakes in good time.

In a calm air the Paradis can reach its minimum speed (depending on the wing loading) by application of 60 cm up to 65 cm of the brake range.

Accelerated Flight:

When flying with the speed system applied the angle of attack is lower and the canopy can collapse more easily than in normal (trim) flight. The faster the canopy is flown the more dynamic the collapses and stalls will be and the more skill will be required for quick recoveries. Therefore do not use speed system in turbulent conditions, close to the ground or near other airspace users. Always fly with sufficient clearance from the terrain and always keep the brake handles in your hands!

To use the speed system, simply place your feet on the stirrup and push forward in a horizontal plane. If a loss of back pressure of the stirrup on your legs is noticed, this is a warning that the canopy is probably about to collapse. Release the stirrup and thus the speed system immediately. With this feeling you may actually prevent most collapses from happening while using the speed system. If a collapse should still occur, release the speed system immediately and correct the collapse as described below.

Attention: Do not apply brakes when fully accelerated! Braking increases lift near the trailing edge. The main lift point moves backwards. Due to this the wing can loose stability for a short time.!



Steering - turns:

The Paradis is a very responsive paraglider and reacts very directly and instantly to any steering input. Weight shift input quickens turns and ensures minimal height loss. Any weight shift has a greater effect the more loosely the chest-strap is fastened. A combined technique of weight shift and pulling on the inside brake line is the most efficient turning method, whereby the radius of the turn is determined by the amount of inside brake pulled and weight shift. A stalling wing tip announces itself by a gentle surge backwards of the wingtip. If this occurs you will need to release the brakes immediately.

In case it is impossible to control the Paradis with the brake lines the C-risers may be used to steer and land the canopy. Attention! Pulling brake too fast or too hard can result in the canopy entering a negative spin.

Active Flying (Thermaling and Soaring):

In turbulent conditions the glider should be flown actively with brakes lightly applied to avoid canopy collapse. This improves stability by increasing the angle of attack of the canopy. The canopy should not rock back or surge forward much but should remain above the pilot. In turbulent flight, if the canopy pendulums forward, this should be corrected by prompt braking. A pendulum movement of the canopy backwards is corrected by releasing the brakes in good time. This is part of basic active flying.

Approach and Landing:

To avoid excessively demanding situations on the approach to landing, it is important to initiate the process at an adequate altitude. This leaves you enough time to observe and appropriately deal with wind direction and any other aircraft in your vicinity.

The Paradis is easy to land. The final leg of the landing approach must be into the wind. During this final glide the paraglider should be decelerated slowly and at approximately one meter above the ground, according to conditions, the pilot should flare the canopy. The glider may climb again, gaining height, if too much brake is used too early. Strong wind landings require correspondingly less brake. Do not apply full brake before the pilot is safely on the ground. The final glide during the landing approach should be straight and not marked by steep or alternating turns as these can result in a dangerous pendulum effect near the ground.

Attention! Do not allow the canopy to fall onto the leading edge with energy. This can destroy the material and affects the life of the ribs at the leading edge!

The Paradis is certified for towing. The Paradis has no out of the ordinary towing characteristics, although a relatively low angle of attack and thus low tow tension should be maintained during launch and the initial part of the tow. The Paradis has no tendencies towards deep stall/parachuting. Therefore we allow tow-launched flights with a similar technique to that described above. There is sufficient margin to counter-steer the glider in a normal towing situation. Make sure you use proper equipment, experienced personnel and all relevant safety precautions for towing.

WARNING!! Please always ensure that the brake lines are adjusted to the lengths recommended here. Setting them shorter could lead to a tendency to stall during towed flight. Apart from this, there are no special procedures.

MOTORISED FLIGHT

Note!! Although, motorized flight can be a great success due to the gliders very easy take-off characteristics, stability and good handling, always use a certified combination of engine - harness and glider. If in doubt check with your federation. Contact the manufacturer or importer for the current legality of motorized flight.

WARNING!! The Paradis is not suitable for jumps from aircraft.

WARNING!! The Paradis is not designed to be used for aerobatics.

EXTREME FLYING MANOEUVRES

This section describes flying conditions which can be deliberately induced, or which can develop unintentionally due to turbulence or pilot error. Any pilot who flies through turbulence is sure to be faced with these special flight conditions at some point. So take a good look at these flight manoeuvres or prepare for them by SIV (safety training over water). Mastering these flying conditions significantly improves your active flight safety. Sufficient height, as well as carrying a reserve parachute, is imperative.

WARNING!! All the critical flight conditions described here require a thorough knowledge; otherwise carrying them out may be very dangerous. Sufficient height above the ground is imperative. Bear in mind that all deformations of the canopy can increase the sink rate by 2 - 10 m/sec, depending on the degree of deformation. Carrying out these manoeuvres wrongly may lead to a crash.

Remember this is a glider with unspectacular reactions to disturbances in the air. Whenever in doubt, raise the brakes and let the glider fly. The glider has a high internal pressure, resistance to tucking and very high degree of passive safety. It is recommended that at this stage you already practise an active flying style. The key to active piloting is keeping the glider above your head at all times. We recommend in principle that you hold the brake handle in your hand whenever possible, or fly with your hands through the brake handles, to allow you to react immediately to any possible disturbances.



WARNING!! If you fly with your hands through the brake handles, you may lose valuable time in activating the rescue system.

Asymmetric collapse:

A negative angle of attack can cause all or part of the leading-edge of the Paradis to collapse (e.g. in turbulent air). Basically the Paradis will re-open spontaneously from closures of up to 70% with a change of direction of up to 360°. The time this takes, and the associated height loss, can however be noticeably reduced by appropriate action by the pilot. Apply opposite brake on the inflated side, the outside of the curve, to stop the turning movement of the canopy. This should be accompanied by appropriate weight-shift. If you react immediately, 30% brake on the open side should suffice to hold the canopy on a straight course. In the event of a big collapse, this braking should be applied very carefully to avoid stalling the remaining inflated wing. The pilot's correction for direction can be aided by a pumping out the deflation; a slow, long pumping action of the brake of the deflated side of the wing helps the canopy to re-inflate. If the glider does not self recover and the pilot does not correct the canopy can enter a stable spiral dive!

WARNING!! The Paradis is a paraglider with shark nose airfoils and with more backwards positioned A suspension points. These airfoils and position of A suspension points give more inherent stability and offers more resistance against collapses. It wasn't necessary to feature the Paradis with special folding lines to perform the manoeuvre. But nevertheless the **accelerated asymmetric collapse** must be performed correctly in a proper way and this preferably by safety trainings.

It is important to take the outermost A1-riser together with A-main riser firmly in one hand. At the beginning of pulling the move (in the direction of pilot's body) must be slow and after the move of cca 5 cm, it can only be strongly pulled down. In case the A1-riser is not properly held along with the main A-riser, it may happen that the wing tip opens faster. The opening is then distinctive with the risk of a cravat.

“Cravat” / Line-over:

In the event of some lines becoming tangled during flight (caused by whatever), the following action is recommended: The pilot stabilizes the glider by gently applying the brakes. Please be aware that in this condition the brake pressure can be higher and the brake travel shorter.

Without pilot input a line-over will result in a stable spiral dive.

Here are the various options to untangle a line-over:

- pumping the collapsed side.
- pulling the stabilizer line or lines causing the problem.
- should both measures fail, it may be possible to untangle the line-over by inducing a full stall. This manoeuvre, however, should only be carried out by advanced pilots with experience in extreme flight situations and with sufficient altitude available.

Attention! If these manoeuvres fail or if in any doubt, the pilot should instantly use their emergency parachute system!



Front Tuck:

A front tuck can be induced by strongly pulling the A-risers or by sudden, heavy turbulence. The entire leading edge spontaneously collapses. Gentle braking on both sides will reduce the lateral pendulum motions and simultaneously accelerate re-inflation.

The Paradis generally self recovers from an initiated front tuck. When having a very large front tuck, a frontal rosette can happen (the wingtips move forwards: shaping a horseshoe). Gentle braking can avoid this deformation.

A quick recognition of the situation and a quick reaction by braking on both sides as long as the collapsed wing is behind the pilot helps the recovery and limits the altitude loss.

WARNING!! As already described the Paradis is a paraglider with shark nose airfoils and with more backwards positioned A suspension points. These airfoils and position of A suspension points give more inherent stability and offers more resistance against collapses. It wasn't necessary to feature the Paradis with special folding lines to perform the manoeuvre. But nevertheless the **accelerated symmetric collapse** must be performed correctly in a proper way and this preferably by safety trainings.

It is important to take the two outermost A-lines together (approx 10 cm above the Rapid gliders) firmly in your hands. Do not use the central A-lines! At the beginning of pulling the move (in the direction of pilot's body) must be slow and after the move of cca 5 cm, it can only be strongly pulled down. By this way the leading edge collapses properly over its span. In case you use all A risers for this manoeuvre and you do it without initial pulling it may happen that the leading edge collapses over all depth in the center of the wing. The result may be an asymmetric opening and the risk of a big cravat increases!

Parachutal stall (deep stall):

In a parachutal stall the paraglider has no forward momentum combined with a high descent rate. A parachutal stall can be caused by, among other reasons, a too slow exit from a B-line stall or severe turbulence. Porous canopies (UV influence) or canopies out of trim (stretched or shrunken lines) are much more susceptible to a parachutal stall and therefore should not be flown. These are some of the reasons regular checks should be carried out on your glider. A wet canopy or temperatures below zero centigrade (0°C) may also cause a stable parachutal stall. The Paradis will usually spontaneously recover from a parachutal stall within 2-3 seconds. If the canopy remains in a parachutal stall, it is sufficient to gently push both A risers forward or to push the accelerator.

Attention! If brakes are applied while in a parachutal stall, the glider may suddenly enter a full stall!

If a parachutal stall occurs on landing approach, the pilot should prepare for a hard landing and make a parachute roll landing. In close proximity to the ground, due to the forward surging pendulum effect, a recovery may be more dangerous than a hard landing in parachutal stall.



Full-stall:

To induce a full stall, apply full brake on both sides. The glider slows down steadily until it stalls completely. The canopy suddenly surges backwards a long way. In spite of this uncomfortable reaction of the canopy, both brake lines must be consequently held down with all your strength until the canopy is stabilized (directly overhead). This usually takes 3-6 seconds. The Paradis generally flies backwards during a full stall but doesn't always form a front rosette. A frontal rosette can be formed by entering the full stall slowly. When entering (braking) fast, the canopy will not always form the desired front rosette. Attention! Always apply both brakes evenly!

To recover from a full stall, smoothly release both brakes simultaneously until 90% of leading edge reopens, then release brakes rapidly. The glider ends the full stall on its own without surging forward.

WARNING!! If the brakes are released rapidly and asymmetrically, the glider may surge almost 90° and suffer an extensive asymmetric collapse.

The danger of overcorrecting and overreacting exists during all extreme flight manoeuvres. Thus, any corrective action must be gentle and steady and done with feel!

Spin (or negative spin):

Pulling brake on one side too fast or too hard can result in a negative spin. During a spin the canopy turns relatively fast around the centre section of the canopy while the inner wing flies backwards (hence the term negative).

There are two usual reasons for an unintentional spin:

- One brake line is being pulled down too far and too fast (e.g. when inducing a spiral dive)
- When flying at low speed one side is being braked too hard (e.g. when thermaling).

To recover from an unintentional spin, the pulled down brake line should be immediately released as soon as a spin is suspected. The canopy will accelerate and return to its normal straight and stable flying position, without losing too much height. If the spin is allowed to develop for some time, the glider surges a long way forward on one side and a dynamic asymmetric collapse or a line-over can occur. Gently apply the brakes to avoid side or central collapse of the canopy and the possibility of a cravat (one of the tips becoming entangled in the lines). See part collapses.

WARNING!! If you are LOW and are in an unintentional spin, or if the canopy is caught in a cravat USE YOUR RESERVE.

Wingover:

To induce a wingover the pilot flies consecutive alternating turns to gradually steepen the angle of bank. During wingovers with a high bank angle, the outside wing begins to unload. Further increase of the angle of bank must be avoided, because any possible resulting collapse may be quite dynamic!



WARNING! Full-stall, spin and wingover (over 90 degree angle of bank) are prohibited aerobatic manoeuvres and may not be performed during normal flying. Incorrect recovery procedures or overreacting of the pilot may have dangerous consequences! Attention! The Paradis is not designed to be used for aerobatics.

Alternative (emergency) steering:

If for some reason it becomes impossible to control the Paradis with the brake lines the C-risers may be used to steer and land the canopy. Attention! Of course the range is much shorter (5-10 cm) then with the brakes. It is also possible to control the direction of the flight by pulling on a stabilizer line or by weight-shifting.

RAPID DESCENTS

Spiral dive:

A spiral dive is the fastest way to lose altitude, however, the very high G-forces make it difficult to sustain a spiral dive for long and it can place high loads on the pilot and glider. By tensing ones abdominal muscles and a higher body tension you can to some extent resist the high G-forces. Don't forget proper breathing! As soon as any, even slight, light dizziness or impaired vision is noticed the spiral should be exited immediately.

The Paradis has a very effective spiral dive. This allows rapid descent without stalling. To enter a spiral dive the pilot should weight-shift on one side while slowly pulling the brake gradually on the same side as weight-shifting. During a spiral dive the angle of bank can be controlled by increasing or reducing the amount of inside brake. When spiral diving the Paradis it is recommended that the outside brake is lightly applied. This helps stabilize the wing and enables an easier and safer exit from the spiral. To exit, release the inside brake slowly. The Paradis did not show a tendency to remain in a stable spiral by sink rates up to 10 m/s during testing. At high sink speeds or if the pilot keeps his weight on the inside, the wing can stay in a continued deep spiral and has to be actively exited. This is done by weight shifting to the outside and gentler braking of the outside wing.

WARNING!! Nearly all gliders will have a tendency to stay in the spiral if the sink-rate exceeds around 15-m/s, depending on weight-shifting, wing loading and G-force. In fact most gliders need a counter-input to end a turn.

Attention! Due to energy retention, the glider will climb a lot after a deep spiral-dive release. If you apply inner brake and decelerate the glider for two or three turns, big pendulum effects can be avoided.

WARNING!! Practise spiralling with caution and lower sink-rates to get a feel for the gliders behaviour. A pilot who is dehydrated or not accustomed to spiralling can lose consciousness in a steep spiral dive!



Big ears:

When in big-ears, the horizontal speed is higher than the sink rate, unlike a spiral dive or a B-line stall. This rapid descent technique is used to quickly and horizontally exit a dangerous area in the desired direction. In order to collapse the outside wing, pull the outside A-lines.

When the pilot holds the outside A1-risers on both sides and pulls them down, the Paradis easily tucks the outside wings and enters a stable descent mode. The pilot keeps hold of the brake handles along with the outside A1-risers in his hands. By braking on one side and weight-shifting, the canopy remains steerable. In order to increase the sink rate as well as the horizontal speed, this manoeuvre should be done together with use of the speed system. Apply the speed system after big ears are induced (step into the speed-bar before you grab the outer A1-risers). Big-ears substantially reduces the risk of canopy stability problems in turbulent air. To exit Big-ears release the A1-risers. The canopy does very slowly self-recover. To quicken the recovery, the pilot can dynamically pull down and immediately release the brakes of the glider.

WARNING! Never do big-ears in spirals, as this may drastically reduce the number of lines taking the already high loads, causing structural failure.

Attention! All rapid descent techniques should first be practised in calm air and with sufficient height so the pilot can use them in emergency situations! By far the best technique is to fly correctly and safely, so you never have to descend rapidly!

B-line stalls:

To induce a B-line stall symmetrically pull down slowly on both B-risers, until the canopy folds (parallel to its long axis). The airflow over the top surface is almost fully detached and the canopy enters a vertical descent flight mode without forward movement. Further pulling of the B-risers reduces the surface area more and increases the sink rate. (Up to 8 m/s) Be careful, pulling too far or too rapidly may cause a frontal horseshoe to form. To exit from this flight mode release the B-risers at first rapidly but then gently (1 sec). The canopy surges forward re-attaching the airflow over the top surface and resumes normal flight. When the B-risers are released, the brakes should not be activated. This will give the canopy the chance to gain speed and resume normal flight. On exit from a B-line stall on no account just release the B-risers, as this can cause overloading. If canopy does not recover apply both brakes gently to recover or pull the A-risers, until the canopy regains forward speed.

Summary:

For all extreme manoeuvres and rapid descents please note:

- first practise manoeuvres with an instructor during safety training!
- before inducing any manoeuvre the pilot must check that there are no other airspace users below him!
- during the manoeuvre the pilot must have the canopy within his view!

Looking after your canopy correctly will prolong the life of your paraglider.

Deterioration: a few tips!

- The canopy is mainly made of NYLON, cloth which, like any synthetic material, deteriorates through excessive exposure to UV. Hence, it is recommended that you reduce UV exposure to a minimum by keeping the paraglider packed away when not in use. Even when packed in the bag do not leave it in the sun.
- Keep the canopy and lines clean as dirt may penetrate into the fibre and damage the lines or the cloth.
- Ensure that the lines are not folded tightly. It's extremely important to avoid any sharp bending of the lines, especially the main lines. Pay careful attention to the lines to avoid damaging them. Any over stretching of lines apart from the strain imposed during normal flight, should be avoided as over stretching is irreversible.
- Be careful, not to allow snow, sand or stones to enter inside the canopy's cells: the weight can change the angle of attack, or even stall the glider; additionally the sharp edges can destroy the cloth!
- Check line lengths after tree or water landings. They can stretch or shrink lines.
- Never drag the wing over rough ground! This will damage the cloth on the wear points. When preparing the wing on a takeoff with rough ground, don't pull the wing over it (i.e. by pulling the brakes). Please try to pack the wing on soft ground.
- Uncontrolled strong wind takeoffs or landings can result in the leading edge of the canopy hitting the ground at high speed which may cause rips in the profile and damage the rib material.
- We advise you to fold the glider "accordion wise", rib to rib. This packing procedure takes slightly longer and is easier to do with an assistant, but it guarantees the rigidity of the plastic profile reinforcements. This is very important for the performance of your glider!
- Prevent lines from catching on anything as they may be over stretched. Do not step onto the lines. Although the lines were tested with a bending test they can be damaged if stepped on whilst on a hard surface, or if they come into contact with sharp objects.
- Do not always fold the canopy symmetrically to the centre cell as this can cause constant stress on the centre cell (centre cell always to the outside).
- Clean the paraglider with fresh water after contact with salt water. Salt water crystal can reduce line strength, even after rinsing in fresh water. Replace lines immediately after contact with salt water. Also check canopy material after water landings, as waves can place uneven forces and cause cloth to distort in specific areas. Always remove gliders from the water by holding only the trailing edge. Clean the paraglider with water and a soft sponge. Do not use any chemicals or spirits for cleaning, as these can permanently damage the cloth

Storage:

- Store the paraglider in a dry space at ambient temperature away from chemicals and UV light.
- Never pack or store the glider wet. This shortens the life of the cloth Always dry glider thoroughly before any packing or storage.
- During transport it has to be considered, that some materials of the paraglider are temperature sensitive. Avoid subjecting your wing to high temperatures (e.g. the luggage space of a parked car in the sun)!
- When sending your wing as a parcel, take extra care with packing.



Repairs and checks:

- Tears in the canopy must be professionally sewn. Adhesive patches are only adequate for very minor damage.
- Repairs should only be carried out by the manufacturer, distributor or authorized workshops. Only original spare parts may be used!
- The lines must be checked after every 50 hours flying time and whenever the flight behaviour changes
- Any changes to the canopy lines or risers, except those approved by the manufacturer, will void the certificate of airworthiness.
- The Paradis must be checked as a minimum, after two years or after 100 flying hours by the manufacturer or authorized workshops.

Disposal:

- The synthetic materials used in a paraglider need professional disposal. Please send disused canopies back to us: we will dismantle and dispose of it.

In Conclusion:

The Paradis is a modern paraglider. You will enjoy many safe years of flying with your Paradis if you look after it correctly and adopt a mature and responsible approach to the demands and dangers flying can pose. It must be clearly understood that all air sports are potentially dangerous and that your safety is ultimately dependent upon you. We strongly urge you to fly safely. This includes your choice of flying conditions as well as safety margins during flying manoeuvres. We recommend once more that you only fly with a certified harness, reserve parachute, and helmet. Also the certification placard must be present on the glider. Every pilot should be suitably qualified, have a valid license and 3rd party insurance. The Paradis is delivered with a stuff-sack, Velcro compression strap, MAC PARA backpack, repair kit and user manual.

Full line lengths Paradis

All lengths are measured from riser's main attachment point up to the tissue of canopy on attachment points. Brake lines are measured from the Swivel on brake handle up to the trailing edge.

Paradis 22 (XS)

Center	A	B	C	Brakes
1	6579	6487	6611	6909
2	6542	6453	6579	6595
3	6534	6458	6569	6512
4	6439	6363	6465	6392
5	6479	6414	6498	6271
6	6344	6271	6330	6189
7	6172	6111	6159	6223
8	6099	6053	6078	6100
9	6074	6036	6038	6046
10	5839	5816	5873	6006
11	5785	5816	5846	5996
12				6059

Paradis 24 (S)

Center	A	B	C	Brakes
1	6884	6794	6928	7289
2	6848	6760	6891	6957
3	6845	6761	6881	6871
4	6742	6661	6773	6740
5	6784	6712	6809	6615
6	6647	6572	6639	6536
7	6464	6402	6460	6561
8	6383	6333	6361	6442
9	6357	6314	6320	6386
10	6112	6080	6148	6343
11	6057	6078	6120	6334
12				6401

Paradis 26 (M)

Center	A	B	C	Brakes
1	7132	7042	7167	7539
2	7094	7002	7132	7195
3	7089	7003	7123	7107
4	6984	6900	7009	6977
5	7029	6952	7045	6845
6	6879	6801	6869	6761
7	6689	6629	6681	6791
8	6606	6561	6584	6664
9	6578	6544	6540	6603
10	6324	6292	6358	6561
11	6266	6292	6328	6549
12				6613

Paradis 28 (L)

Center	A	B	C	Brakes
1	7403	7307	7444	7853
2	7363	7270	7406	7497
3	7356	7267	7392	7407
4	7250	7162	7275	7268
5	7296	7218	7315	7133
6	7142	7058	7124	7040
7	6939	6879	6929	7070
8	6859	6810	6835	6937
9	6830	6791	6794	6878
10	6563	6531	6600	6830
11	6502	6534	6572	6821
12				6893

Paradis 30 (XL)

Center	A	B	C	Brakes
1	7679	7579	7721	8172
2	7639	7534	7681	7805
3	7631	7537	7671	7707
4	7519	7428	7549	7567
5	7569	7486	7589	7425
6	7406	7325	7397	7331
7	7200	7137	7195	7361
8	7111	7068	7090	7224
9	7085	7050	7044	7161
10	6805	6772	6843	7111
11	6742	6772	6809	7099
12				7176

Paradis 33 (XXL)

Center	A	B	C	Brakes
1	8025	7920	8071	8565
2	7983	7878	8028	8170
3	7980	7882	8018	8077
4	7862	7766	7891	7926
5	7912	7827	7933	7775
6	7744	7656	7726	7676
7	7526	7460	7514	7710
8	7442	7396	7416	7569
9	7412	7373	7366	7497
10	7115	7085	7158	7451
11	7048	7086	7121	7434
12				7514

LINE PLANS

Line descriptions:

The following printed line plans show the line configurations.

Line types in colors

Aramid/Polyester A-8000U-070

Aramid/Polyester A-8000U-090

Aramid/Polyester A-8000U-130

Aramid/Polyester A-6843-080

PPSL 160

PPSL 191

PPSL 200

Dynema/Polyester A-7850-200

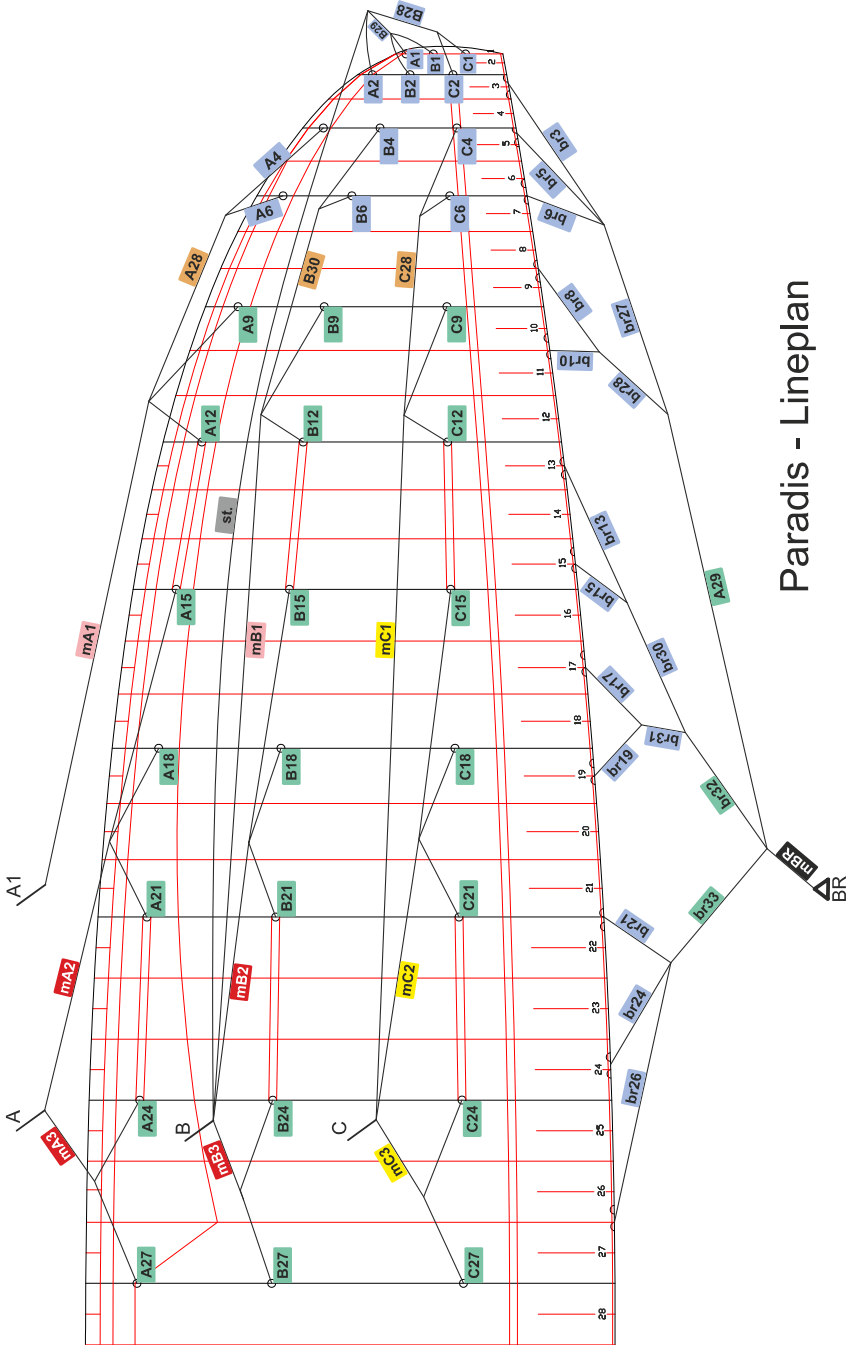
Riser lengths Paradis-22, Paradis-24

	A	A1	B	C
Trim-position	525	525	525	525
Accelerated	370	390	430	525

Riser lengths Paradis-26, Paradis-28, Paradis -30, Paradis -33

	A	A1	B	C
Trim-position	525	525	525	525
Accelerated	350	380	410	525

The lengths are measured from the main attachment point to the lower edge of rapid links.



Paradis - Lineplan

LINE LENGTHS OF PARADIS

Line	Length of line [cm]						Color	Material	
	Paradis 22	Paradis 24	Paradis 26	Paradis 28	Paradis 30	Paradis 33			
mA1	395,0	415,0	430,0	450,0	470,0	490,0	Red	Dynema/Polyester PPSL-160	
mA2	395,0	415,0	430,0	450,0	470,0	490,0		Dynema/Polyester PPSL-200	
mA3	395,0	415,0	430,0	450,0	470,0	490,0		Dynema/Polyester PPSL-200	
A1	18,4	19,5	19,5	20,5	21,5	22,5		Aramid/Polyester A-8000U-070	
A2	67,4	69,6	70,8	75,0	79,2	79,5		Aramid/Polyester A-8000U-070	
A4	56,8	60,4	62,6	65,0	67,4	71,2		Aramid/Polyester A-8000U-070	
A6	58,9	62,6	64,9	67,4	69,9	73,8		Aramid/Polyester A-8000U-070	
A9	171,9	180,9	188,4	194,2	200,0	212,2		Aramid/Polyester A-8000U-130	
A12	189,3	199,2	207,4	214,0	220,6	233,8		Aramid/Polyester A-8000U-130	
A15	203,1	213,7	222,5	229,7	236,9	250,9	Aramid/Polyester A-8000U-130		
A18	199,0	209,4	218,0	225,0	232,0	245,8	Aramid/Polyester A-8000U-130		
A21	208,4	219,3	228,3	235,7	243,1	257,4	Aramid/Polyester A-8000U-130		
A24	208,8	219,6	228,7	236,1	243,5	257,8	Aramid/Polyester A-8000U-130		
A27	212,3	223,3	232,5	240,1	247,7	262,2	Aramid/Polyester A-8000U-130		
A28	107,0	112,0	117,0	120,0	123,0	131,0	Aramid/Polyester A-8000U-090		
st.	465,0	490,0	510,0	530,0	550,0	580,0	Red	Aramid/Polyester A-6843-080	
mB1	395,0	415,0	430,0	450,0	470,0	490,0		Dynema/Polyester PPSL-160	
mB2	395,0	415,0	430,0	450,0	470,0	490,0	Dynema/Polyester PPSL-200		
mB3	395,0	415,0	430,0	450,0	470,0	490,0	Dynema/Polyester PPSL-200		
B1	21,4	22,6	22,7	23,9	25,1	26,3	Yellow	Aramid/Polyester A-8000U-070	
B2	21,4	22,6	22,7	23,9	25,1	26,3		Aramid/Polyester A-8000U-070	
B4	53,7	57,1	59,2	61,5	63,8	67,3		Aramid/Polyester A-8000U-070	
B6	54,8	58,2	60,4	62,7	65,0	68,6		Aramid/Polyester A-8000U-070	
B9	166,0	174,7	182,0	187,5	193,0	204,9		Aramid/Polyester A-8000U-130	
B12	182,3	191,8	199,8	206,0	212,2	225,0		Aramid/Polyester A-8000U-130	
B15	196,0	205,8	214,6	221,5	228,4	242,0		Aramid/Polyester A-8000U-130	
B18	191,4	201,0	209,7	216,4	223,1	236,4		Aramid/Polyester A-8000U-130	
B21	200,8	210,8	219,9	227,0	234,1	247,9		Aramid/Polyester A-8000U-130	
B24	200,4	210,3	219,4	226,6	233,6	247,4		Aramid/Polyester A-8000U-130	
B27	203,8	213,9	223,2	230,5	237,7	251,7		Aramid/Polyester A-8000U-130	
B28	50,0	51,0	52,0	55,0	58,0	58,0		Aramid/Polyester A-8000U-070	
B29	45,0	46,0	47,0	50,0	53,0	52,0		Aramid/Polyester A-8000U-070	
B30	107,0	112,0	117,0	120,0	123,0	131,0		Aramid/Polyester A-8000U-090	
mC1	395,0	415,0	430,0	450,0	470,0	490,0		Yellow	Dynema/Polyester PPSL-191
mC2	395,0	415,0	430,0	450,0	470,0	490,0			Dynema/Polyester PPSL-191
mC3	395,0	415,0	430,0	450,0	470,0	490,0			Dynema/Polyester PPSL-191
C1	19,2	20,6	20,8	22,1	23,4	23,7			Aramid/Polyester A-8000U-070
C2	22,2	23,6	24,0	25,4	26,8	27,4			Aramid/Polyester A-8000U-070
C4	54,5	58,0	60,1	62,3	64,5	68,1			Aramid/Polyester A-8000U-070
C6	58,0	61,7	63,9	66,3	68,7	72,5			Aramid/Polyester A-8000U-070
C9	171,0	180,1	187,6	193,3	199,0	211,2			Aramid/Polyester A-8000U-130
C12	189,0	198,9	207,1	213,6	220,1	233,2			Aramid/Polyester A-8000U-130
C15	204,6	215,3	224,1	231,4	238,7	252,7			Aramid/Polyester A-8000U-130
C18	201,2	211,7	220,4	227,5	234,6	248,5			Aramid/Polyester A-8000U-130
C21	211,5	222,5	231,6	239,2	246,8	261,2			Aramid/Polyester A-8000U-130
C24	212,2	223,3	232,4	240,0	247,6	262,1			Aramid/Polyester A-8000U-130
C27	215,7	227,0	236,2	244,0	251,8	266,5			Aramid/Polyester A-8000U-130
C28	107,0	112,0	117,0	120,0	123,0	131,0			Aramid/Polyester A-8000U-090



Line	Length of line [cm]						Color	Material
	Paradis 22	Paradis 24	Paradis 26	Paradis 28	Paradis 30	Paradis 33		
mBR	282 + 30	298 + 30	307 + 30	320 + 30	333 + 30	350 + 30		Dynema/Polyester A-7850-200
br3	50	53	55	56,5	59	61,5		Aramid/Polyester A-8000U-070
br5	44	46,5	48,5	49,5	51,5	53,5		Aramid/Polyester A-8000U-070
br6	44,5	47,0	49,0	50,0	52,0	54,5		Aramid/Polyester A-8000U-070
br8	48,5	51,5	53,5	55,0	57,5	59,5		Aramid/Polyester A-8000U-070
br10	54	57	59,5	61,0	63,5	66,5		Aramid/Polyester A-8000U-070
br13	58	60,5	63,5	65,5	67,5	71,5		Aramid/Polyester A-8000U-070
br15	55	58	60,5	62,5	64,5	68		Aramid/Polyester A-8000U-070
br17	54	57	60	61,5	63	67		Aramid/Polyester A-8000U-070
br19	66,0	69,5	73,0	75,0	77,0	82,0		Aramid/Polyester A-8000U-070
br21	109,5	116,5	120,5	125,0	129,5	137,0		Aramid/Polyester A-8000U-070
br24	117,5	125	129	134,0	139	146,5		Aramid/Polyester A-8000U-070
br26	149,0	158,5	163,5	170,0	176,0	186,0		Aramid/Polyester A-8000U-070
br27	58,0	61,0	63,0	66,0	68,0	72,0		Aramid/Polyester A-8000U-070
br28	58,0	61,0	63,0	66,0	68,0	72,0		Aramid/Polyester A-8000U-070
br29	215	227	235	245,0	255	265		Aramid/Polyester A-8000U-130
br30	70,0	74,0	77,0	80,0	83,0	87,0		Aramid/Polyester A-8000U-070
br31	79,0	83,0	86,0	90,0	94,0	98,0		Aramid/Polyester A-8000U-070
br32	211,0	223,0	230,0	240,0	250,0	260,0		Aramid/Polyester A-8000U-130
br33	257,0	270,0	280,0	292,0	304,0	316,0		Aramid/Polyester A-8000U-130

Mentioned line lengths are marked on stretched lines that are pulled under 5 kg. The real length measured from one loop to other loop differs in according to type of the line, its diameter and type of processing method (sewing or splicing).

When replacing a line always compare the symmetry with opposite side.

Check-intervals

All paragliders used in flight must be checked at least every 24 months. For paragliders used by paragliding schools the period is 12 months.

Personnel authorised to carry out checks

A valid flying license and training course by National association are the basis for permission to carry out paraglider checks

Identification of glider

An identity sticker with details of certification and serial number is attached to the glider.

Components of the check

Porosity

The porosity should be checked with a porosity meter (JDC). Compare the resultant data with the producer's manual.

Porosity measures should be taken on at least three points of both the top and bottom surface. The first point should be placed 20-30 cm from leading edge in the middle of canopy. Second and third points are placed left and right from first measure point at 25% of the span. One additional measurement should be made on the top surface of the wing tip.

The identified time should be higher than 30 second (JDC). In the event of the result being less than 30 seconds, the result of the check is a fail.

Overall strength check

The check of canopy strength should be made with a Bettsometer (B.M.A.A approved Patent No. GB 2270768 Clive Betts Sales). On the top and bottom surfaces make small holes with a needle at the Aline attachment points. The exact verification should be made in accordance with the Bettsometer user manual.

Line strength check

Line strengths should be as specified in accordance with the certification requirements. One main line should be taken from each array and have its strength checked with a tension-meter.

Required strengths should be higher than:

- A + B main lines x measured value > 8 x maximum take-off weight and higher then 800 kg for the A + B arrays.
- C mean lines x measured value > 6 x maximum take-off weight and higher then 600 kg for the C arrays.

Replacements for damaged lines must be with new original lines. Line lengths are taken from the lines data page.



Line length measurement

Lines should be separated and each line measured under a tension of 5 kg. Measurement is made from the line karabiner to the canopy's surface in according to the method of certification. Measurement of brake lines is made from the knot on swivel to upper loop of galery line. The length of bunching line is not included. Rib numbering begins in the middle of canopy and leads to the wing tip.

Measured full lengths should be documented in the inspection record and are compared with certified full line lengths protocol. Lengths should not differ by more than 10 mm. The opposite sides should be checked for symmetry.

Canopy line-attachment points check

Attachment points should be checked for damage and stretching. Defects, loops and flares should be repaired.

Canopy fabric check

Ribs, diagonal ribs, top and bottom surface should be checked. Any damage to sewing or tears to the fabric, which could influence flying characteristics must be repaired.

Lines

All lines should be checked for tears, breaks any damage to the sheath or signs of wear. Special attention should be paid to the sewing of the line loops. Damaged lines must be replaced.

The results should be documented in the inspection record.

Connector check

All line carabineers, trimmers (if used), speed systems and pulleys should be inspected for visible damage. Open or improperly secured connectors should be secured in accordance with the producers recommendations.

Risers

Both risers should be checked for tears, signs of wear or any damage and measured with a pull of 5 daN strength. Measured data should be documented in the inspection record. The difference must not be higher then 5 mm when compared to specified lengths.

Final check

The glider sticker and check sticker must be inspected for readability and correctness. The check must be documented with date, signature and stamp on the canopy and in the user manual.

TREATING NATURE WITH RESPECT

Finally the call to practise our sport with respect for nature and wildlife! Don't walk outside marked routes, don't leave any waste, don't make needless noise and respect the sensitive biological balance in the mountain eco system: especially in the take off area!

CHECKS

Name	Company	Date	Signature & Stamp

TEST FLIGHT CERTIFICATE

Paraglider type:

Serial number:

Test flown on:

by

MAC PARA TECHNOLOGY

Confirmation by dealer:

Technical data

<i>High Performance EN-B</i> Size		Paradis 22 (XS)	Paradis 24 (S)	Paradis 26 (M)	Paradis 28 (L)	Paradis 30 (XL)	Paradis 33 (XXL)
Zoom flat	[%]	88	92,5	96	100	104	109
Area flat	[m ²]	21,54	23,79	25,63	27,81	30,08	33,04
Area projected	[m ²]	18,45	20,38	21,95	23,82	25,76	28,3
Span flat	[m]	11,28	11,86	12,31	12,82	13,33	13,97
Aspect ratio flat	-	5,91	5,91	5,91	5,91	5,91	5,91
Root cord	[m]	2,46	2,58	2,68	2,79	2,90	3,04
Cells	-	56	56	56	56	56	56
Weight	[kg]	3,85	4,1	4,3	4,6	4,85	5,15
Weight range - free *	[kg]	55-75	70-90	78-100	90-112	105-130	115-145
Weight range - free *	[lbs]	121-165	154-198	172-220	198-247	231-287	254-320
Min.speed	[km/h]	23-25	23-25	23-25	23-25	23-25	23-25
Max.speed	[km/h]	37-39	37-39	37-39	37-39	37-39	37-39
Top speed (accelerator)	[km/h]	50-52	50-52	50-52	50-52	50-52	50-52
Glide ratio	-	+10	+10	+10	+10	+10	+10
Min. Sink rate	[m/s]	1,05	1,05	1,05	1,05	1,05	1,05

* Free flying pilot equipped = weight naked + cca. 15 kg (33 lbs)



MAC PARA TECHNOLOGY LTD.

Televizní 2615

756 61 Rožnov pod Radhoštěm

Czech Republic

Tel.: +420 571 11 55 66

Tel./fax: +420 571 11 55 65

e-mail: mailbox@macpara.cz

www.macpara.com

